



Physical Security Information Management

appvision

The banner features the 'appvision' logo in white lowercase letters on a blue background with abstract circular patterns. To the right, the text 'Integrated Security & Building management software' is written in white. On the far left, a white circular sensor or camera lens is partially visible.

appvision

Integrated Security & Building management software

AppVision is used to centralise :

- cctv surveillance systems,
- fire and intrusion systems,
- access control,
- building automation,
- SCADA & automation projects.

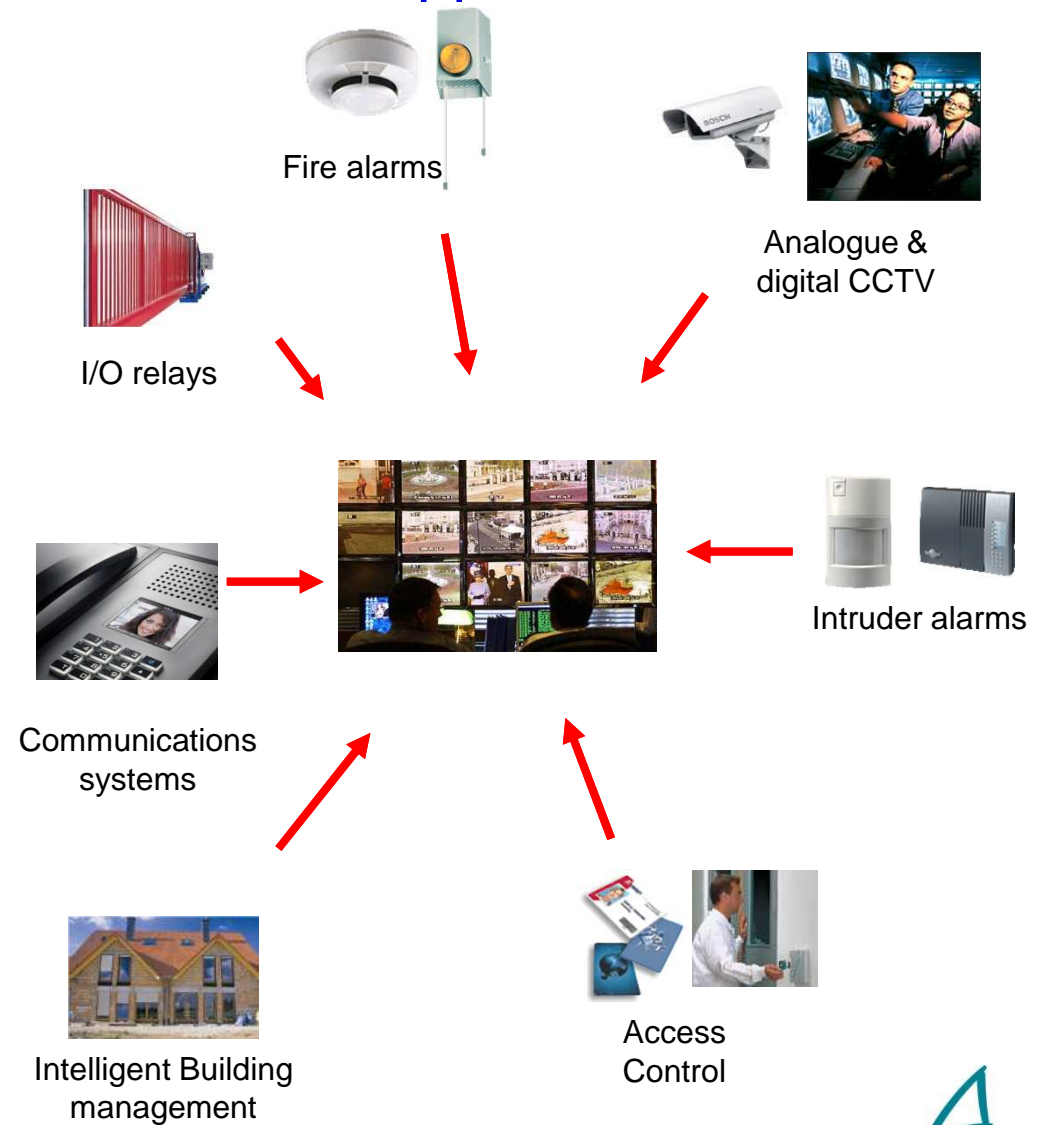


- First deployment in 1998 after 2 years R&D
- Prysm Software : IT engineers in industrial computing and security equipment
- Sales partners around the globe for sales and support
- Over **1900 deployments** : city centre's, banks, museums, military bases, warehouses, factories, retail stores , office buildings.....
- 2011 - a new AppVision deployment every 1.3 days



AppVision is an open architecture application

- *AppVision is multi protocol*
- *Windows XP / Vista / W7 / Win Servers*
- *Multi workstation over IP*
- *Easy to use and install*
- *Complete range of features & open scripting*
- *Graphic interface for visual & control of equipment*
- *Consult events in real time*
- *User admin and access levels*
- *Low cost for new integrations*
- *Free SDK for manufacturers and partner companies*
- *OEM - lower cost of ownership*



Flexible & modular solution : from small to multi site projects

Only 3 modules to manage :

- *Technical alarms & building management*
- *CCTV*
- *Access control*

Low cost & scaleable solution for projects starting with a few cameras / alarm detection points



Modular & scaleable software for fully integrated systems



Bring together alarm systems, access control, analogue & digital cctv, intercoms, building automation....



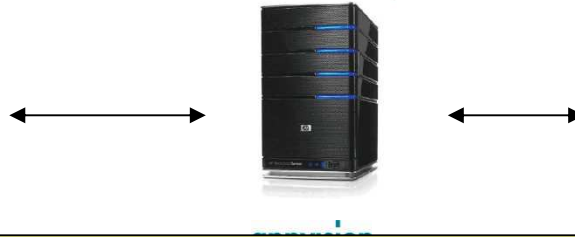
nedap
AEOS

ASSA ABLOY

HID

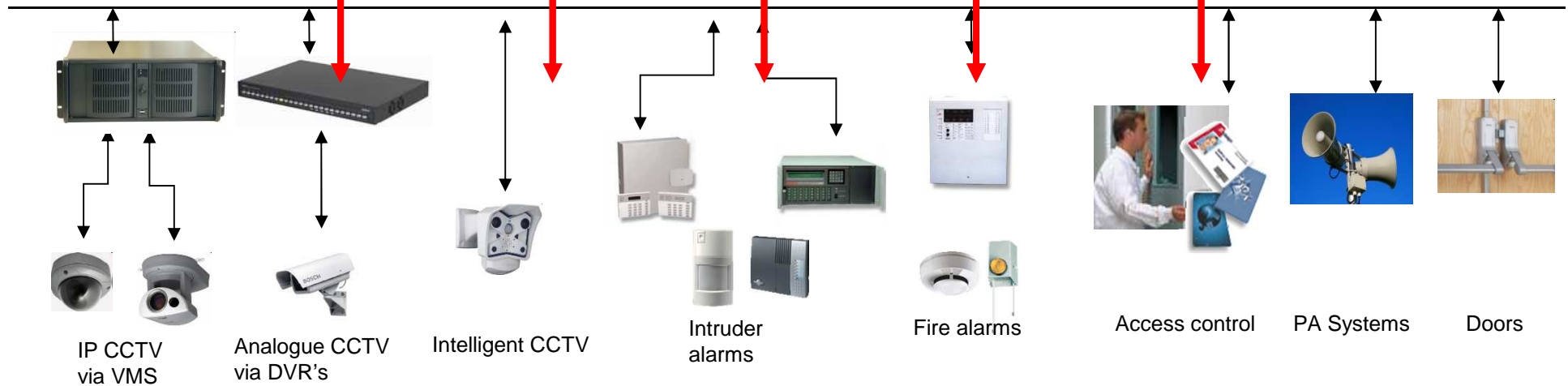


Integration and interoperability



AppVision provides interaction between all different connected systems to the user. Cause and effect relationships are easily created : open zonal cctv on alarms, switch off alarm system when valid access card is used, send alarm messages to PA broadcast.....

Building/street lighting
Temperature control
Lift management



Open architecture is an applied philosophy



- *These open and industry standard protocols enable AppVision Building Manager to connect a large number of security and building systems,*



- *However some other equipment systems may require a dedicated driver :*



- *We facilitate external development with our free of charge Driver Development Kit (DDK)*

- *Or we can undertake the development at very competitive rates*



Some of our driver integrations include



CCTV / Video Surveillance

Axis, Camtrac, Dedicated Micro, Intellex Senc
Genetec, Geutebrück, GeoVision, JVC NVR,
Milestone, Onssi, Mobotix, Matrice Lilin, Sony,



Bosch DIVAR, DiBos & Matrice Allegiant,
Samsung Techwin, Pelco DX & Endura,
NiceVision, VDG



Intrusion and Fire Detection Systems

Honeywell Galaxy,
ARD Isoview,
GE/ ARITECH CD150 & Master ...,
Bosch DS7400, D6600, Erobus, ...,
C+K / APLEX, 3GS,
ELKRON MB 60/500, MP200 ...,



AppVision already supports several big name VMS applications as well as analogue cctv systems



BOSCH
Invented for life

2000 – TOA, Commend, Zenitel Stentofon
ASCII, TCP / IP, DDE,
Inter server, SNMP, OPC

SAMSUNG TECHWIN

Access Control

AppControl (part of AppVision suite)
ARD, ARITECH Master, ASSA ARX
ASICE, Cardax (Gallagher), DDS, I2E
GE SECUREPERFECT & GE Facility Commander
NEDAP AEOS, Paxton, SYTEL
Siemens (OPC), Synchronic, TDSI
Many others

SCADA, Building Automation and Control

EIB/KNX, Merlin Gerin, Honeywell,
Johnson Controls, MODBUS / JBUS master or
slave (Modicon, April, ...),
UNITELWAY, ETHWAY, FIPWAY
Telemechanics, SINEC-H1, SINEC-L2,
3964R Siemens, SYSMAC-WAY (Omron),
MELSEC (Mitsubishi), MEWNET (Matsushita),
DF1 (Allen Bradley), SUCOMA (Klockner-
Moeller), SOFBUS (Sofrel), PROFIBUS,

AppVision is a gateway for external access control software
to become a multi protocol graphic interface. Contact us for details.



AppVision link to iBMS software : Tridium data sharing



appvision
Server



Local Area Network

Security Systems



OBIX protocol



TRID!UM
Server

AppVision Building Manager supports many protocols used in building automation, but can also link to a dedicated BMS software for alarm and event centralisation. Here we present the link to Honeywell Tridium's Niagara platform via the OBIX protocol development



Lighting



HVAC



Energy

Custom build your interfaces

Graphic interface with site layout and symbols for each security device

Fire and burglar alarm management

Live photo update of person on badge access and exit

Real-time on screen security events

CCTV can be built into GUI

Trace of alarm activity

Timestamped log of all operator activity

Permanent status of all connected devices

physim

Overview.syn [auto]

Site Overview

Whole Site

Fire and burglar alarm management

Graphic interface with site layout and symbols for each security device

Live photo update of person on badge access and exit

Real-time on screen security events

CCTV can be built into GUI

Trace of alarm activity

Timestamped log of all operator activity

Permanent status of all connected devices

View photos

Real-time



Information:
 Hour: 22/02/05 16:26:31
 Badge: DOME PATRICE
 Reader: Exit Reader
 Result: AUTHORISED

Date & Time	Status	server	Initiation finished
22/02/05 16:49:52		server	Initiation of driver finished 1
22/02/05 16:49:52		Condition Input Central A	A_2000 - Archives
22/02/05 17:04:35	Normal	Condition Input Central A	A_2020 - Archives
22/02/05 17:04:35	Normal	Condition Input Central A	A_2003 - Motion Detector Entrance Principale
22/02/05 17:04:45	Normal	Condition Input Central A	A_2003 - Motion Detector Entrance Principale
22/02/05 17:04:50	AUTHORISED	ReadExitWorkshop - Exit Reader Workshop	DOME PATRICE
22/02/05 17:05:05	OK	Temp/Pressure/Water temperature	

Group: 000 - All Groups

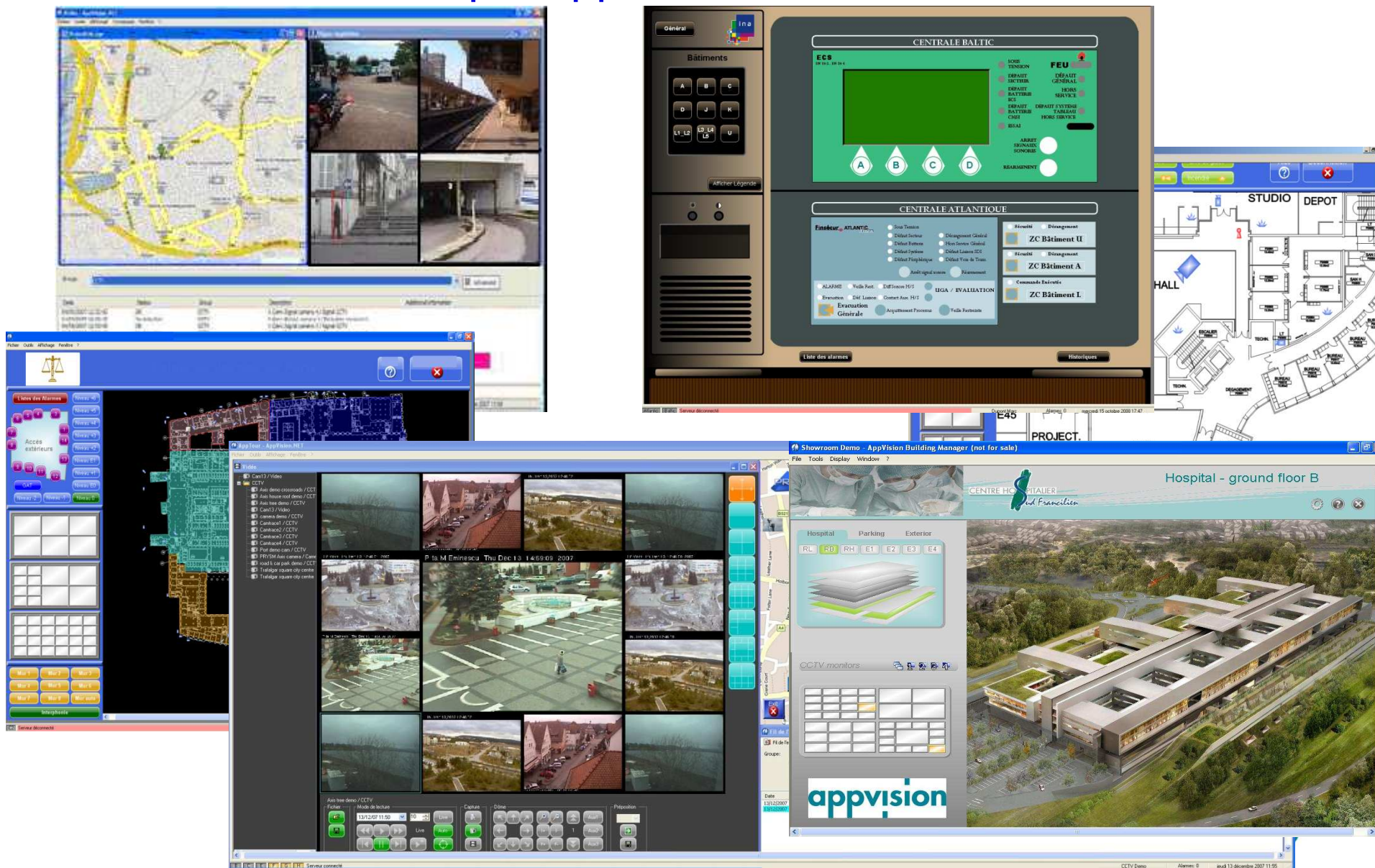
Alarms triggered Alarms unacknowledged

Date & Time	Threat Level
21/02/05 18:06:16	
10/02/05 17:26:37	
10/02/05 17:26:54	
10/02/05 17:26:54	
10/02/05 17:26:54	
10/02/05 17:26:54	
10/02/05 17:26:54	

Group: 000 - All Groups

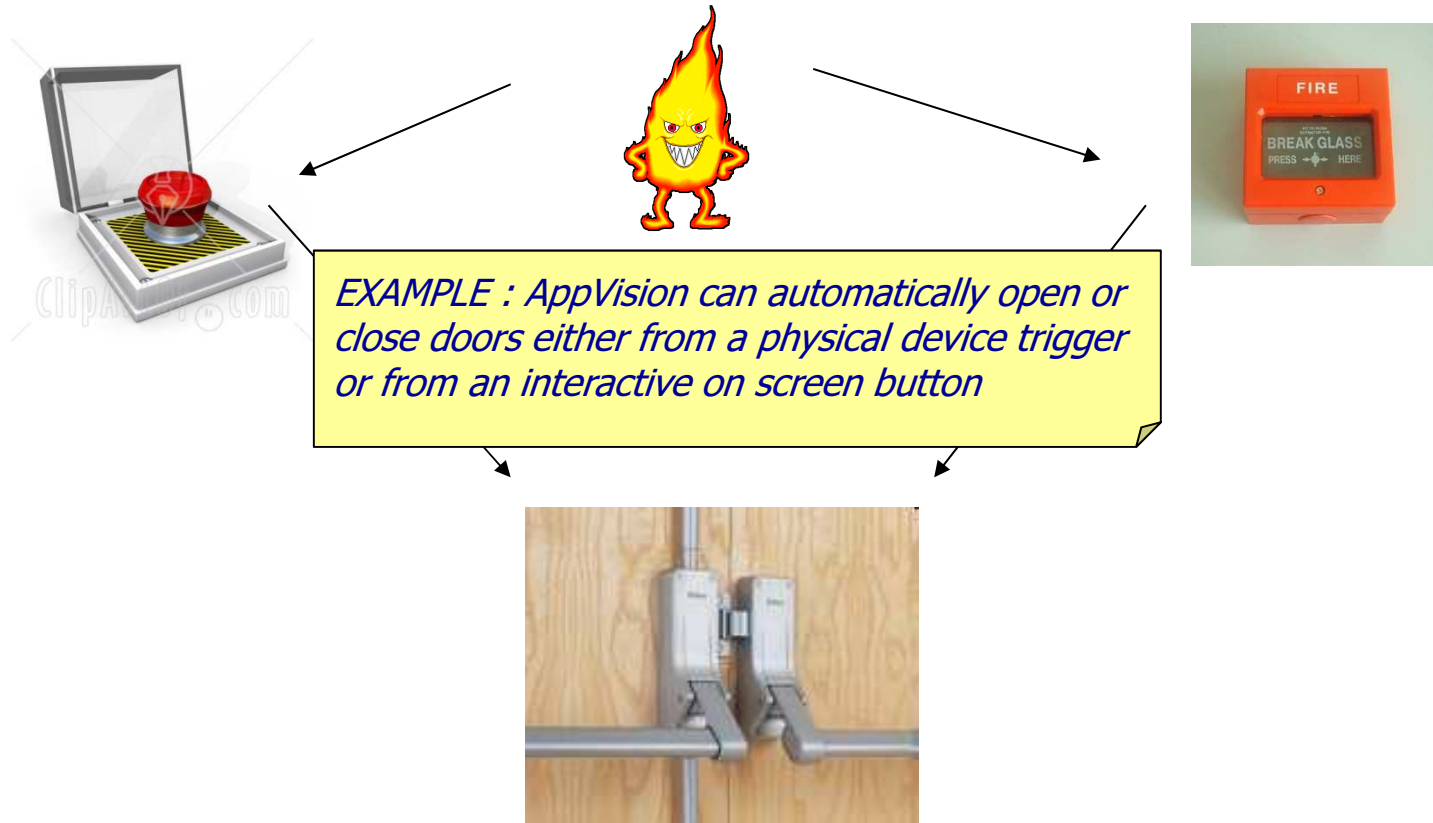
Description	Group	Status
A_CmdG01 - Group Surveillance Administration	Cmd Group Central A	Not Active
A_CmdG02 - Group Surveillance Factory	Cmd Group Central A	Not Active
A_CmdG03 - Group Surveillance Stock	Cmd Group Central A	Not Active
A_CmdS001 - Siren Ground Floor	Cmd Output Central A	Reset Relay
A_Cmd2001 - Lift	Cmd Input Central A	Enum: 0
A_Cmd2002 - Fire Loading Bay	Cmd Input Central A	Enum: 0
A_Cmd2003 - Motion Detector Entrance Principale	Cmd Input Central A	Enum: 0
A_Cmd2004 - Motion Detector Entrance Principale	Cmd Input Central A	Enum: 0
A_Cmd2005 - Motion Detector Entrance Principale	Cmd Input Central A	Enum: 0
A_Cmd2006 - Motion Detector Entrance Principale	Cmd Input Central A	Enum: 0
A_Cmd2007 - Motion Detector Entrance Principale	Cmd Input Central A	Enum: 0
A_Cmd2008 - Motion Detector Entrance Principale	Cmd Input Central A	Enum: 0
A_Cmd2009 - Motion Detector Entrance Principale	Cmd Input Central A	Enum: 0
A_Cmd2010 - Motion Detector Entrance Principale	Cmd Input Central A	Enum: 0

Some sample AppVision screenshots

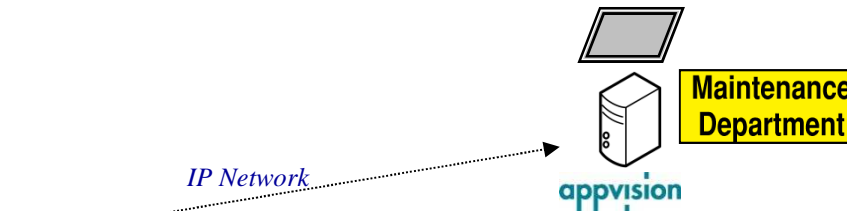
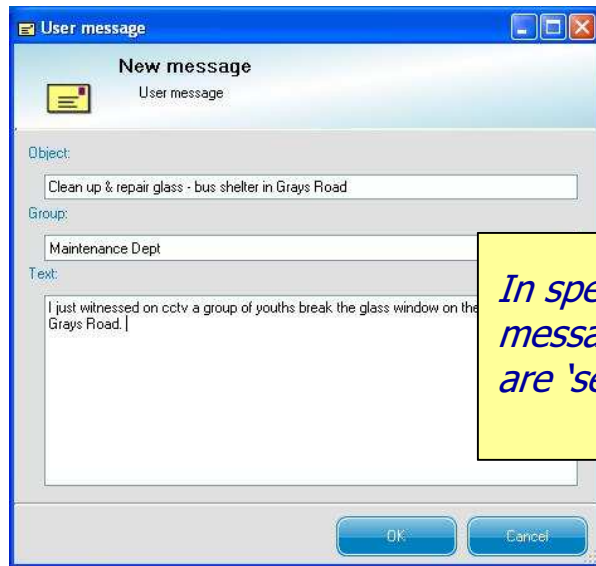


Custom Scenario Building with AppVision

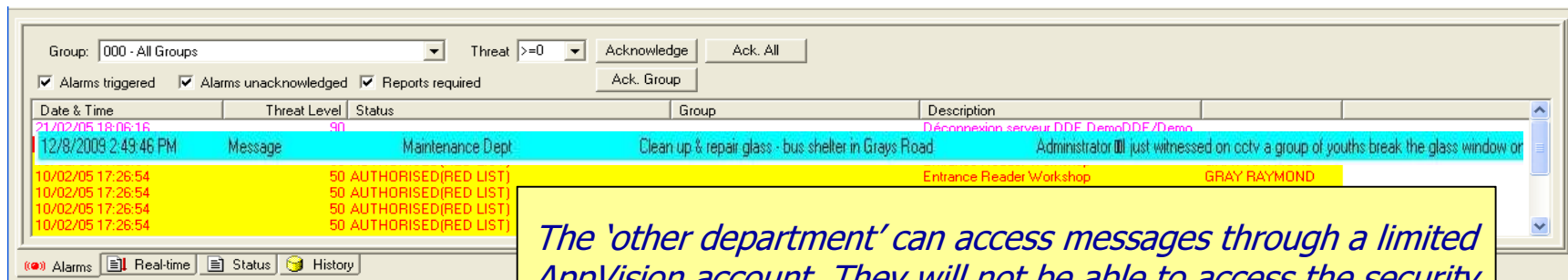
With AppVision you can build animated scenarios and interactive buttons



Internal Messaging & Maintenance Reports



In specific cases it is useful for the AppVision operator to leave messages for colleagues or other departments. These messages are 'sent' internally to other departments.



The 'other department' can access messages through a limited AppVision account. They will not be able to access the security controls.

Easy import wizard : AppVision synchro with VMS in seconds

*Example with Milestone :
Input IP address for XProtect and
AppVision does the rest in seconds*

The screenshot shows the Milestone XProtect Smart Client interface. On the left, there are panels for 'Live', 'Event', 'Output', 'Audio', and 'PTZ Control'. The main area displays several camera feeds. Overlaid on this is the 'AppVision Milestone Wizard' dialog box. The dialog contains the following fields and options:

- AppVision informations
- Connection string: `source=C:\Program Files\Prism\AppVision 3.5\Configurations\Default\Par`
- Variable node: ML
- Milestone informations
- Server Url: `http://192.168.0.28`
- User: Admin
- Password: ●●●
- Variables creation
- Script creation
- Synchronize button

The screenshot shows the AppVision.NET software interface. The title bar reads 'AppVision.NET [Player AppVision]'. The main window displays a grid of 20 camera feeds, each with a label:

- PELCO CCTV
- SONY CCTV
- INTELLEX 2
- NICE VISION
- DEDICATED MICROS
- AXIS CAM 23
- NICE DOME 2
- ENDURA CCTV 1
- INTELLEX CCTV
- AXIS DOME 7
- PELCO DOME
- ENDURA 2
- BOSCH CCTV

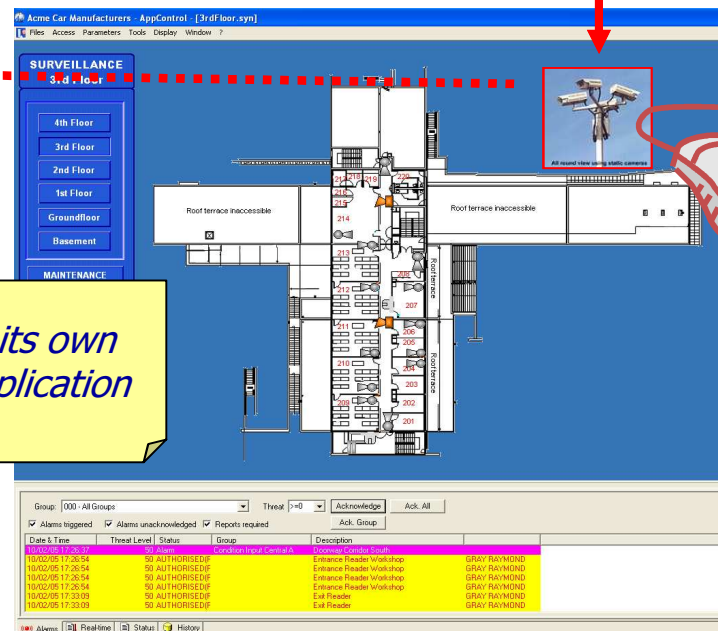
Below the grid, there is a 'Server disconnect' button and a 'Server' dropdown menu. At the bottom, two people are seen from behind, looking at multiple computer monitors displaying various camera feeds.



Video Walls, Navigation & Drag and Drop Icons



Click or drag icons to AppVision to open camera in desired video wall window or pc screen



AppVision contains its own video wall matrix application



Easy interaction between alarms & playback

Acme Car Manufacturers - AppControl - [3rdFloor.syn]

Files Access Parameters Tools Display Window ?

SURVEILLANCE
3rd Floor

4th Floor
3rd Floor
2nd Floor
1st Floor
Groundfloor
Basement

MAINTENANCE

Key

- Detector bi-technology
- Contact sensor
- Badge reader
- Intrusion alarm
- Intrusion alarm

Date & Time	Threat Level	Status	Group	Description	
10/02/05 17:26:37	50 Alarm	Condition Input	Central A	Doorway Corridor South	
10/02/05 17:26:54	50 AUTHORISEDIF			Entrance Reader/Workshop	GRAY RAYMOND
10/02/05 17:26:54	50 AUTHORISEDIF			Entrance Reader/Workshop	GRAY RAYMOND
10/02/05 17:26:54	50 AUTHORISEDIF			Entrance Reader/Workshop	GRAY RAYMOND
10/02/05 17:26:54	50 AUTHORISEDIF			Entrance Reader/Workshop	GRAY RAYMOND
10/02/05 17:33:09	50 AUTHORISEDIF			Exit Reader	GRAY RAYMOND
10/02/05 17:33:09	50 AUTHORISEDIF			Exit Reader	GRAY RAYMOND

Alarms Real-time Status History

AppVision N.1 - [Index]

File Tools Display Window ?

- CCTV system / Camera 1 / Camera
- CCTV system / Camera 2 / Camera
- Production
- CCTV system / Camera 10 / Camera
- CCTV system / Camera 11 / Camera
- CCTV system / Camera 12 / Camera
- CCTV system / Camera 13 / Camera
- CCTV system / Camera 14 / Camera
- CCTV system / Camera 15 / Camera
- CCTV system / Camera 16 / Camera
- CCTV system / Camera 3 / Camera
- CCTV system / Camera 4 / Camera
- CCTV system / Camera 5 / Camera
- CCTV system / Camera 6 / Camera
- CCTV system / Camera 7 / Camera
- CCTV system / Camera 8 / Camera
- CCTV system / Camera 9 / Camera

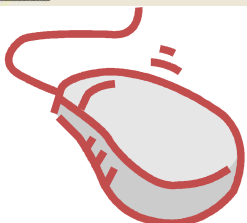
prysm

CCTV system / Camera 1 / Camera

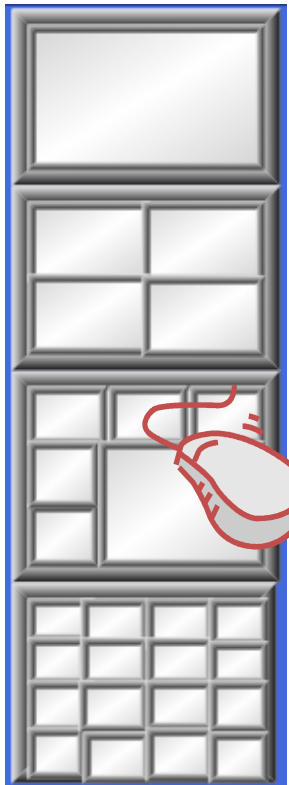
Feed mode: 20/02/05 11:15 10 min Live

Buttons: Live, Stop, Play, Pause, Full Screen, etc.

Click on the alarm event in AppVision to display the CCTV playback stored in the VMS. AppVision does the work for you and pulls up the cctv.



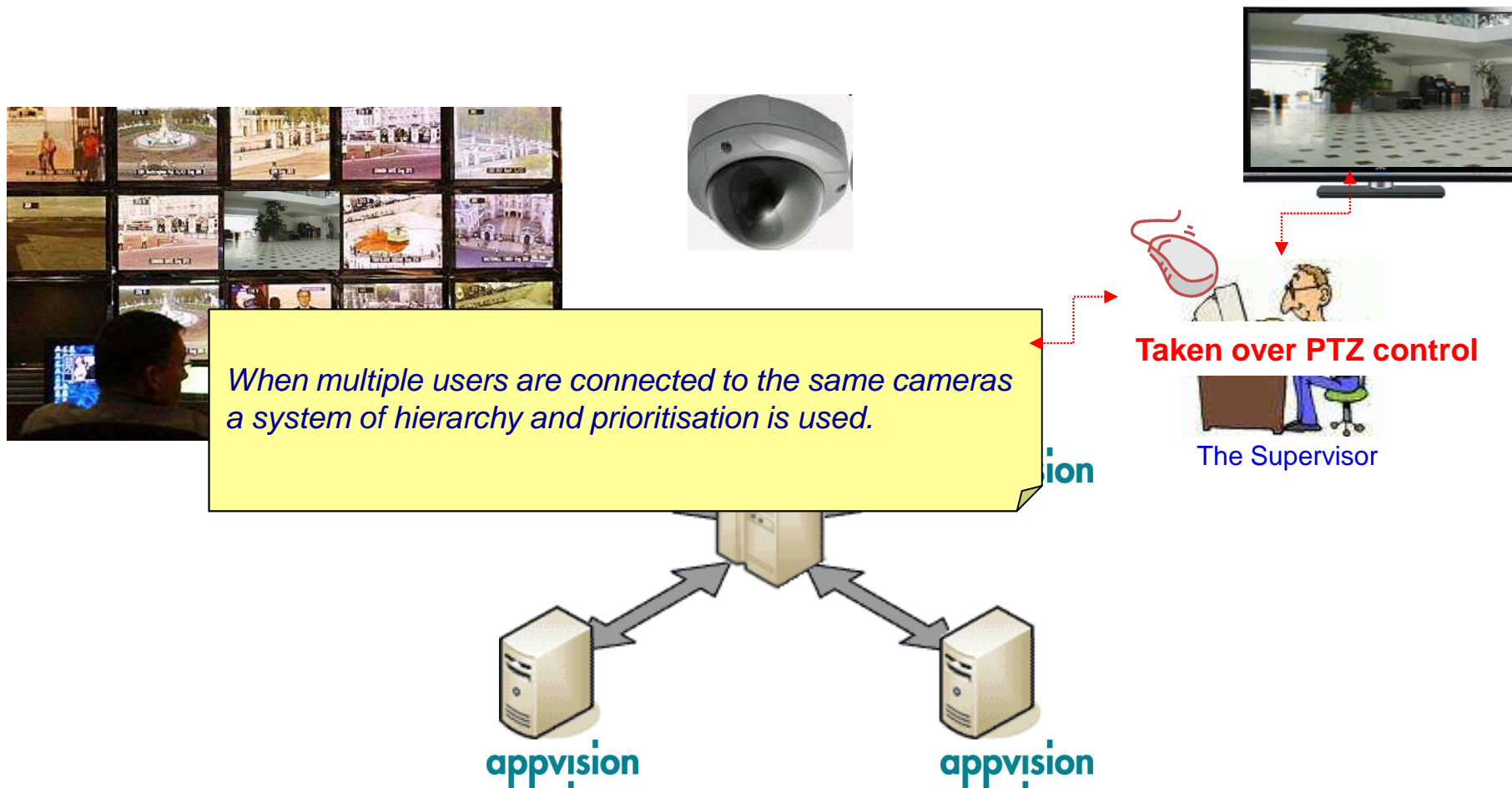
AppVideo Virtual Matrix



AppVision contains its own virtual matrix feature that uses powerful script commands to configure formats and display cameras on screens or walls of monitors. If you don't see the format you want – we'll make a new one for you.



Priority of cctv control for multiple users



Add Hotspots as you see them on cctv

Create a Hotspot and log a security event that was seen on cctv cameras

Click later on the Hotspot or in the log and AppVision will pull up the cctv images for the event

User message

New message

User message

Object:
Clean up & repair glass - bus shelter in Grays Road

Group:
Maintenance Dept

Text:
I just witnessed on cctv a group of youths break the glass window on the bus shelter in Grays Road.

OK Cancel

Date & Time	Threat Level	Status	Group	Description
12/8/2009 2:49:46 PM	Message	Maintenance Dept	Clean up & repair glass - bus shelter in Grays Road	Administrator just witnessed on cctv a group of youths break the glass window on the bus shelter in Grays Road.
10/02/05 17:26:54	50	AUTHORISED(RED LIST)	Entrance Reader Workshop	GRAY RAYMOND
10/02/05 17:26:54	50	AUTHORISED(RED LIST)	Entrance Reader Workshop	GRAY RAYMOND
10/02/05 17:26:54	50	AUTHORISED(RED LIST)	Entrance Reader Workshop	GRAY RAYMOND
10/02/05 17:26:54	50	AUTHORISED(RED LIST)	Entrance Reader Workshop	GRAY RAYMOND
10/02/05 17:26:54	50	AUTHORISED(RED LIST)	Entrance Reader Workshop	GRAY RAYMOND

Alarms Real-time Status History

CCTV integration with alarm systems : cause & effect



CCTV display activation can be automatic upon detection of an intrusion

Acme Car Manufacturers - AppControl - [3rdFloor.syn]

Files Access Parameters Tools Display Window ?

SURVEILLANCE
3rd Floor

4th Floor
3rd Floor
2nd Floor
1st Floor
Groundfloor
Basement

MAINTENANCE

Key

- Detector bi-technology
- Contact sensor
- Badge reader intrusion alarm
- Intrusion alarm

Radar
Dome

Group: 000 - All Groups Threat: >=0 Acknowledge Ack. All

Alarms triggered Alarms unacknowledged Reports required Ack. Group

Date & Time	Threat Level	Status	Group	Description	
10/02/05 17:26:37	50	Alarm	Condition Input Central A	Doorway Corridor South	
10/02/05 17:26:54	50	AUTHORISEDIF		Entrance Reader Workshop	GRAY RAYMOND
10/02/05 17:26:54	50	AUTHORISEDIF		Entrance Reader Workshop	GRAY RAYMOND
10/02/05 17:26:54	50	AUTHORISEDIF		Entrance Reader Workshop	GRAY RAYMOND
10/02/05 17:33:09	50	AUTHORISEDIF		Exit Reader	GRAY RAYMOND
10/02/05 17:33:09	50	AUTHORISEDIF		Exit Reader	GRAY RAYMOND

Alarms Realtime Status History

Acme Car Manufacturers - AppControl - [3rdFloor.syn]

Files Access Parameters Tools Display Window ?

Surveillance list:

- CCTV
- CCTV system / Camera 1 / Camera
- CCTV system / Camera 2 / Camera
- Production
- CCTV system / Camera 10 / Camera
- CCTV system / Camera 11 / Camera
- CCTV system / Camera 12 / Camera
- CCTV system / Camera 13 / Camera
- CCTV system / Camera 14 / Camera
- CCTV system / Camera 15 / Camera
- CCTV system / Camera 16 / Camera
- CCTV system / Camera 17 / Camera
- CCTV system / Camera 18 / Camera
- CCTV system / Camera 19 / Camera
- CCTV system / Camera 20 / Camera
- CCTV system / Camera 21 / Camera
- CCTV system / Camera 22 / Camera
- CCTV system / Camera 23 / Camera
- CCTV system / Camera 24 / Camera
- CCTV system / Camera 25 / Camera
- CCTV system / Camera 26 / Camera
- CCTV system / Camera 27 / Camera
- CCTV system / Camera 28 / Camera
- CCTV system / Camera 29 / Camera
- CCTV system / Camera 30 / Camera

20/10/08 11:15

Buttons: Stop, Play, Full Screen, etc.



Video Analytics or Number Plate Recognition:

- direct or via VMS



AppVision can be directly interfaced with some video analytics applications



Alarm trigger inputs are sent to AppVision by the analytics software or via the VMS and are treated as any other alarm input.

Alarm inputs can also be used for cause and effect with other connected alarm systems.



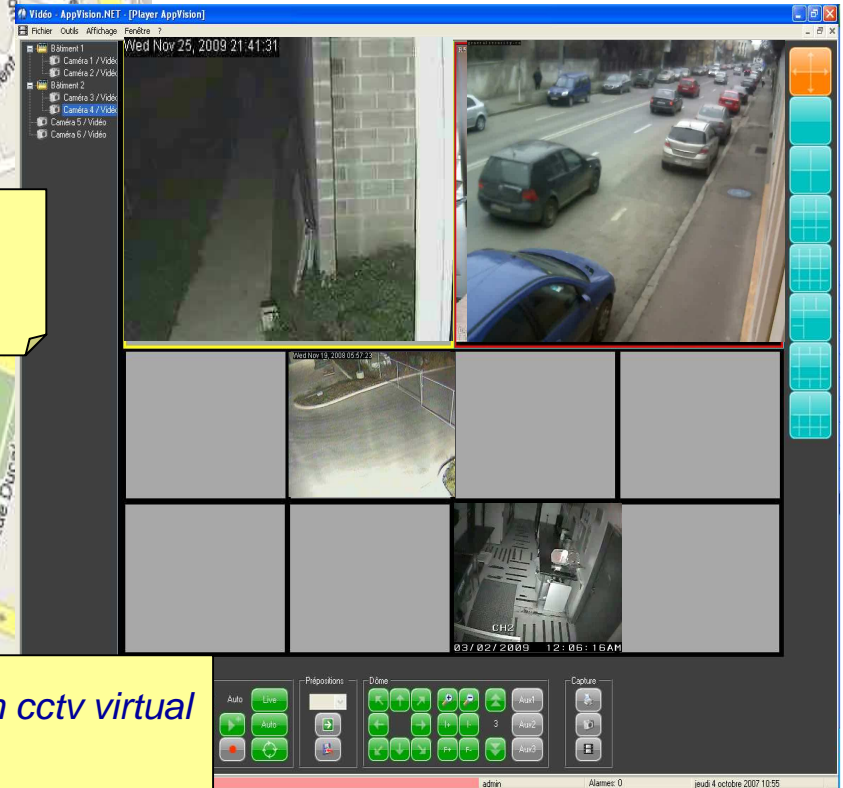
Switch cameras automatically : graphics & cctv



Configure AppVision to switch dome cameras automatically or you can PTZ manually from the graphic plans

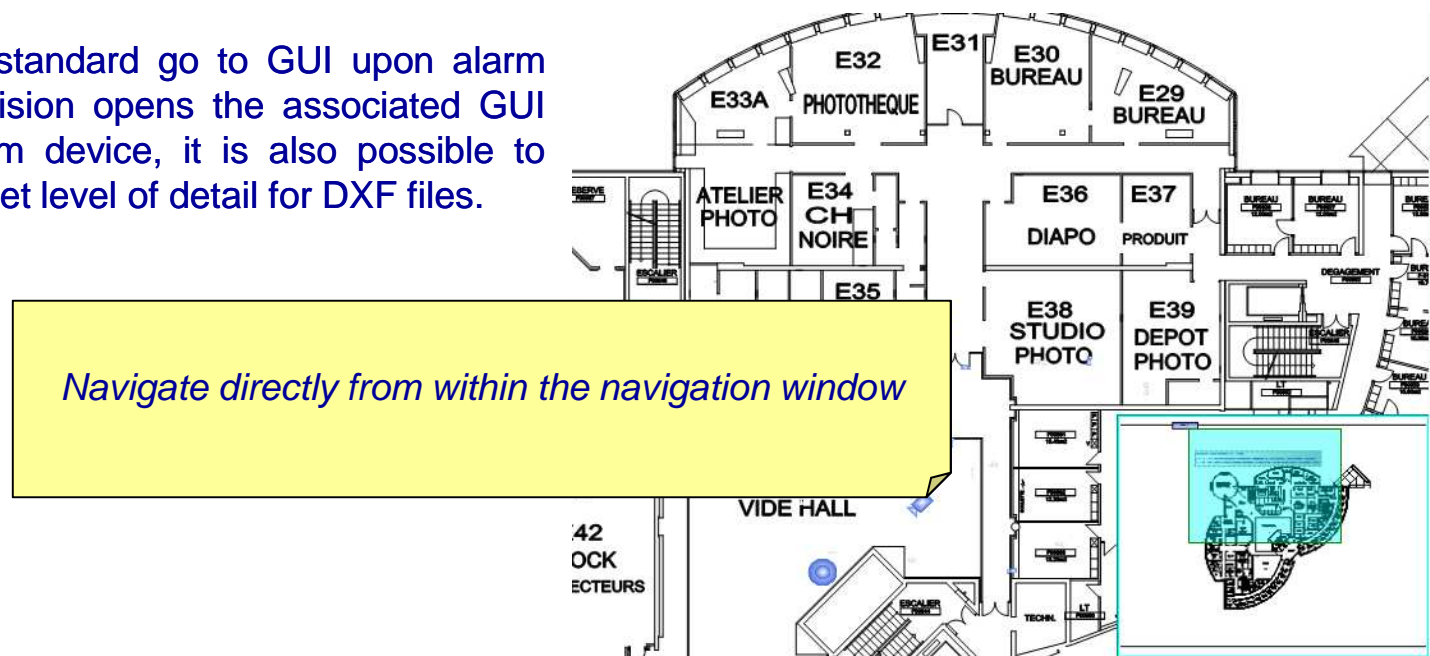


This feature is also useful with cctv virtual guard tour applications



Time saving : very large sites / Autocad

- Autocad floor plans often exist for very large sites
- AppVision can easily import these DXF format plans as background images onto which are placed the various security equipment animated icons
- This saves enormous amounts of time (and hence money) for the end client
- Another special feature for large sites is the navigation window : a miniture of the total floor plan that is used to easily situate the current view and to navigate by moving the blue square
- In addition to the standard go to GUI upon alarm feature where AppVision opens the associated GUI for a particular alarm device, it is also possible to zoom down to a preset level of detail for DXF files.



Market model – pricing guide

- Aggressive pricing model
- Only 3 modules :
 - AppVision : incidents, alarms, hvac, low level data inputs
 - AppVideo : mix and match brand of cctv cameras, DVR or VMS
 - AppControl : direct control over access hardware
- Installer or distributor oriented pricing model – not end user
- Scalable pricing model that fits to project size
 - Starts at 4 cameras (up to beyond 3000)
 - or 150 alarm detection points - upwards



Market model(s) – who deploys AppVision

Project Management Assistance

- Product Configuration :
 - Plans & addresses,
 - Menus,
 - Cause & effect links...
- Deployment & tests on site
- End user training
- Support



Deployed by security installer

- Configuration training (min 2 days)
 - Certification
- Installer manages project
 - Software configuration,
 - Deployment,
 - Tests on site,
 - End user training.
- Support

Our goal is to empower our partners



AppVision Summary

- Flexible open architecture command & control solution for PSIM & building automation
- Simple and rapid deployment – especially for cctv
- Highly competitive licensing model
- Over 1900 deployments around the world since 1996
- Growth through sales and technical partnerships : **low cost developments, free SDK, OEM versions...**



appvision

Some AppVision case studies :

security and building management

Please note : these are high security sites and are not open to visits by our clients nor can they be viewed with remote IP connections



City Centre CCTV control room



- Over 150 fix and PTZ dome cameras based in city centre
- Nice Systems recording software platform
- Hotspot zone management : icons and statistics for incidents by area
- Cause and effect links between cameras is managed by AppVision
- Multiple user login with various levels of user access
- AppVision displays workflow recommendations and actions



Multiple prisons deployment



- Several new prisons in same country in middle east region
- Access control, cctv, perimeter protection, fire systems, emergency doors
- Cause and effect links between hardware systems managed by AppVision
- Multiple user login with various levels of access
- On alarm AppVision displays recommendations and actions
- User can be asked to complete event reports sent by AppVision to his bosses
- AppVision contains a full log : user reaction time, modifications, screens viewed.....



Major new hospital deployment

- Brand new hospital with state of the art security system
- Access control, cctv, perimeter protection, fire systems, emergency doors
- Cause and effect links between hardware systems managed by AppVision
- Multiple user login with various levels of access
- On alarm AppVision displays recommendations and actions
- User can be asked to complete event reports
- AppVision contains a full log : user reaction time, modifications, screens viewed.....



Air Force Base

Highest level security project at underground nuclear base

- Milestone XProtect Video Management system
- Axis CCTV cameras
- Siemens Sintony alarm panels
- Honeywell Galaxy alarm panels





European Parliament, Strasbourg

over 10,000 intruder detection inputs,
emergency exits and emergency lighting

- Phase 1 of this project was to manage all intruder systems in conjunction with emergency door exits and lighting
 - Phase 2 incorporates the existing cctv system and walls of monitors
-
- AppVision contains many time saving features for new configurations that enable us to develop custom command systems in very short lead times
 - Despite the size of this project phase 1 was managed in a matter of weeks from time of ordering to deployment.



Gas Pipeline & Terminal

Large project that unifies intruder detection, access control and cctv

- Pelco Endura CCTV system
- GE Security Master alarm panels
- CHUBB Security CH400 access control



Schenker Joyau Logistics

CCTV and alarms management



- centralisation and control of 4 major logistics sites
- management of 800 cameras using AppVideo module
- synchronisation & management of 20 Camtrace NVR light client servers (uses Linux)
- Mix of Axis encoders for legacy analogue cameras and axis IP cameras
- wall mounted monitors
- CHUBB CH400 alarm panels





Army Base - Mechanised Division



AppVision simplifies emergency procedures

- This site contains 4 separate locations used by the army. AppVision centralises and manages all 4,
- Previously, the client used old style LED circuit boards alongside typewritten notes for each security event,
- AppVision replaced this with a modern security application that enables
 - buildings to be secured remotely,
 - emergency instructions to be presented on screen upon alarm event (each alarm can have separate instructions)
 - security personnel must type in a report following each security event,

This enables security personnel to be replaced rapidly with minimal training requirements for new staff,

- This infrastructure uses several Bosch panels with a Bosch reception bay



Public Transport

CCTV sites security surveillance

- AppVision manages site security for a major capital city public transport provider. This includes :
 - cctv cameras using several analogue DVR's over several sites
 - Honeywell Active Alert video analysis software
 - Alarms management and suspicious behaviour alerts are treated by AppVision and action recommendations are sent to the control room staff



Honeywell

prysm

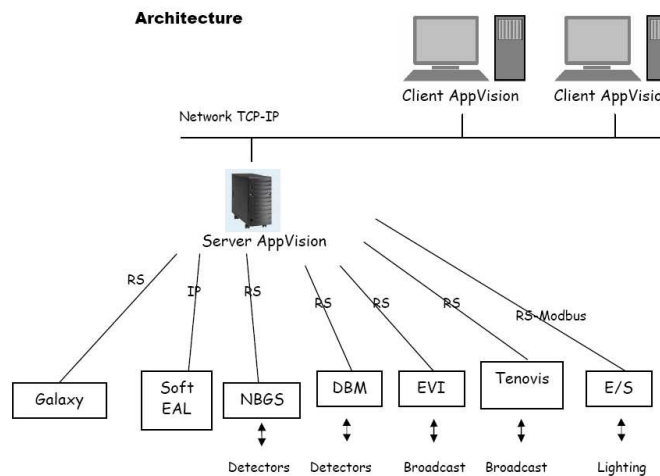
Abbey in Luxembourg

Integration of security and building management systems

- centralisation and control of :



- GE Security Master & Honeywell Galaxy intrusion,
- EAL access control,
- NBGS emergency exit,
- DBM fire alarms,
- EVI Audio public address,
- Tenovis communication,
- lighting with Modbus protocol,
- STIM cctv



Honeywell

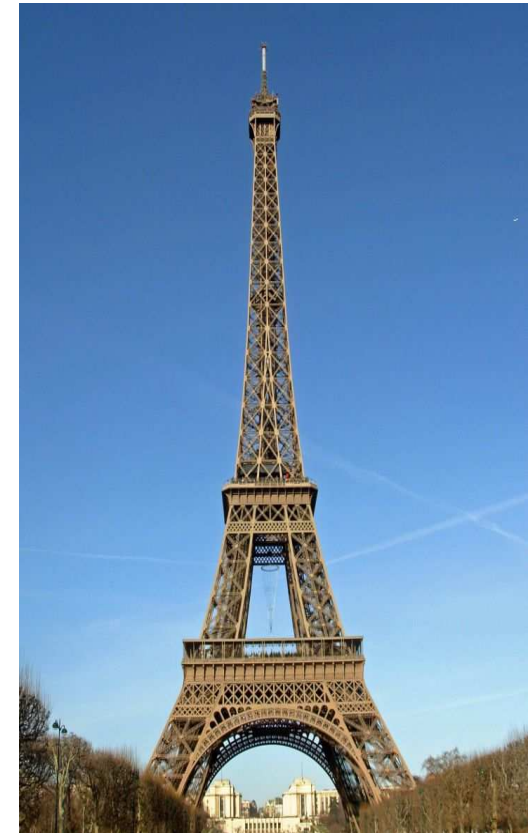


prysm

Eiffel Tower, Paris

AppVision centralises the management of cctv and access control

- In partnership with the access control manufacturer NEDAP, AppVision was deployed on this site to centralise both the Aeos access control with NICE Systems NVR, cctv cameras and analytics technology.
- AppVision permanently dialogues with the NEDAP Aeos software in order to centralise all access control security alarms.
- Nice Vision cctv systems were integrated with AppVision so that all PTZ, playback and alarm features were made accessible directly from the AppVision graphic interfaces.
- Alarms can be managed directly by AppVision from events and alerts from either Aeos or Nice Systems and cause and effect relationships are sent to the other system as a result by AppVision..



Supreme Court

Major integrated security project

- A major security deployment that involves the centralisation of
 - Nice Systems with 120 cameras
 - Video analytics
 - 6 large wall mounted split screens with AppVideo module
 - Galaxy intruder alarm panels
 - 10 AppVision client stations
 - DDS access control – events and alarms are centralised by AppVision



sales contact



Liam Heatley - Sales Manager

liam.heatley@prysm-software.com

Skype : Liam001



Or look up your nearest AppVision partner on
[www.prysm-software.com / contacts](http://www.prysm-software.com/contacts)

All images and logos are the rights of their owners and no intention to portray them otherwise is contained nor implied in this presentation.

